

# Gas Cooktop EPS Series Spec Sheet

GAG86309 / GAS78307 / GAG76202

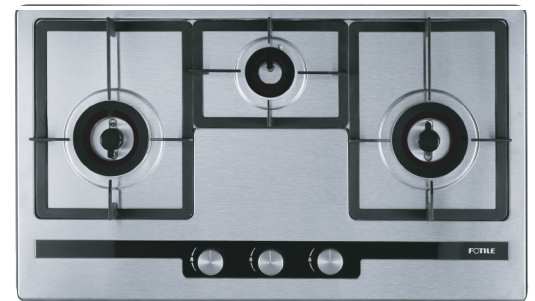
# FOTILE

A BREATH OF FRESH ENGINEERING®

FOTILE EPS Series cooktops are more powerful and more stable providing better performance to the home inspired chef. Built with premium materials like heat resistant tempered glass, to cast iron metal, to timeless stainless steel, the FOTILE cooktops are not only more powerful, efficient, and safe, they are also aesthetically pleasing too.



GAG86309



GAS78307

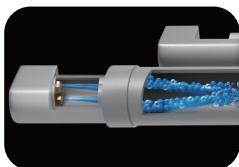


GAG76202

## Key Features:



50% Higher Heating Efficiency Powered by Patented Jet Collision Technology



14,800 BTU Burners and Angled Fire for Powerful Heating



Flame Failure Safety Detection System to Avoid Gas Leakage



12 Safety Guarantees to Keep Families Safe Protected



Sealed Burners for Easy Cleaning

### FOTILE Contact Information:

serviceusa@fotile.com

1-888-315-0366

6 Campus Dr, Suite 210, Parsippany, NJ 07054

us.fotileglobal.com

### 12 Safety Guarantees:

Integrated silicon aluminum and alloy burner / Anti-flashback shield / Child proof knob / Separation box for gas & electricity / 3X reinforced gas leak prevention seal / Copper tubing / Ignition pin protection cover / High-end anti-explosion panel / Installation guide positioning pin / Flame failure / Waterproof cover / Electrical wire wrap shield

# Gas Cooktop EPS Series Spec Sheet

GAG86309 / GAS78307 / GAG76202

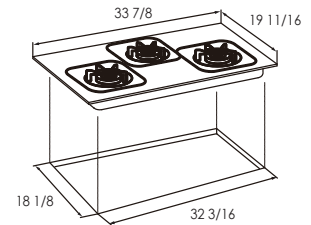
# FOTILE

A BREATH OF FRESH ENGINEERING®

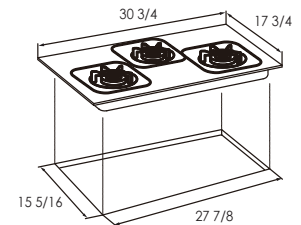
## Specifications:



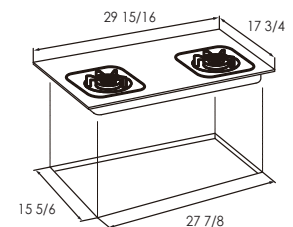
Model	GAG86309	GAS78307	GAG76202
Certification	ETL	ETL	ETL
Product Dimensions (WxD)(inch)	33 7/8 x 19 11/16	30 3/4 x 17 3/4	29 15/16 x 17 9/16
Cut-Out Dimensions (WxD)(inch)	32 3/16 x 18 1/8	27 7/8 x 15 5/16	27 7/8 x 15 5/16
Gas Supply <small>Natural Gas (LP Convertible Kit Required)</small>	Battery	Battery	Battery
No. of Burners	3	3	2
Panel Material	Tempered Glass	Stainless Steel	Tempered Glass
Grate	Cast Iron	Cast Iron	Cast Iron
Heating Load(BTU)	L: 14800 M: 5800 R: 14800	L: 14800 M: 5800 R: 14800	L: 14800 R: 14800
Fast Ignition	√	√	√
Net Weight(lbs)	39.7	26.9	24.3
Gross Weight(lbs)	44.1	31.7	28.6
Packing-Box Size (WxDxH)(inch)	35 7/8 x 21 1/2 x 8 5/16	34 1/2 x 20 1/2 x 8 1/2	32 5/16 x 20 5/8 x 8 3/4



GAG86309



GAS78307



GAG76202

## Installation Examples:

